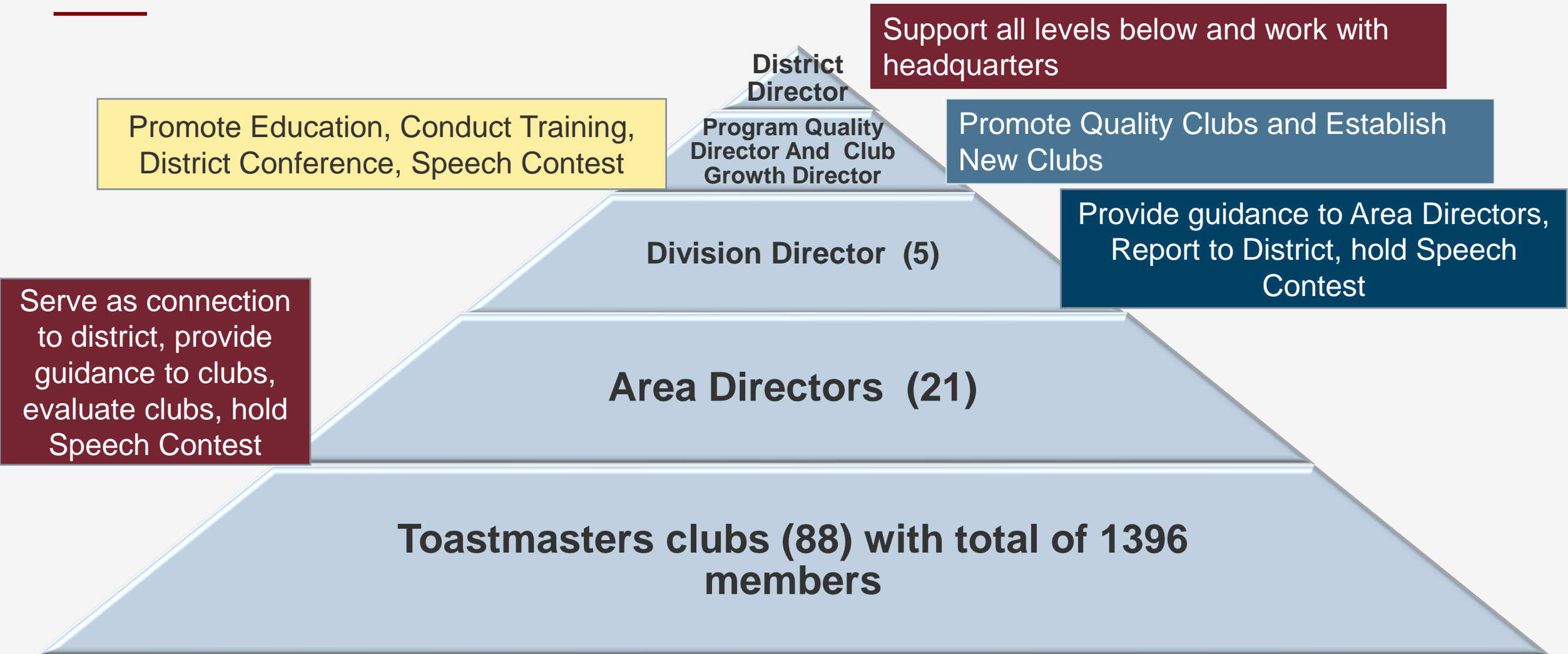




District Director Report

Karen A. Leingang, DTM

District 8 Breakdown



Who Supports Your Club?

[Dashboard link](#)

Determine your club's Area and Division

District Performance
Division and Area Performance
Club Performance
Club Status

District 08 Division and Area Performance

Division Totals

Count	5
Distinguished	0
Select Distinguished	0
President's Distinguished	0

Area Totals

Count	21
Distinguished	0
Select Distinguished	0
President's Distinguished	0

Club Totals

Paid Clubs	88
Distinguished	0
Select Distinguished	0
President's Distinguished	0

⊕ Expand
⊖ Collapse

	Division Goals	D 16	S 16	P 17	D 7	S 8	P 8
Division A	Base 16	Paid Clubs 16		Distinguished Clubs 0			
	Area Goals	D 4	S 4	P 5	D 2	S 3	P 3
Area 02	Base 4	Paid Clubs 4		Distinguished Clubs 0			
		Renewals		Club Visits		Mem.	Club
		Oct	Apr	Nov	May	To Date	Goals
00002905 West County Club		N	N	N	N	12	0
00006629 Chesterfield Toastmasters Club		N	N	N	N	14	0
03447931 Loquacious Leaders		N	N	N	N	12	0
05480999 Aetna Toastmasters		N	N	N	N	13	0
		0%		0%			

Who Supports Your Club?

Determine your club's Area and Division Directors

Division Directors



Division A
Lisa Campbell
Biography



Division B
Jackie Kam-Blackard
Biography



Division C
Herman Koester
Biography



Division E
Willie Blue
Biography



Division F
Rhonda Green
Biography

Area Directors



Area 1
Aiden McDonnell
Biography



Area 2
Karen Dew
Biography



Area 3
Kelly Lawson
Biography



Area 4
Brendan Akos
Biography

[D8 Team Page](#)

Have questions?

- Start with Area Director
- No Response: Contact Division Director
- No Response: Contact District Director
 - Email leingang65@aim.com
 - Cell 618-791-5934

Information Share

- Membership Fees : Due Sept 30
- Area Director visits through Nov 30
- District Picnic Oct 22
- Please invite me to a meeting

Questions

